

安裝及初次設定

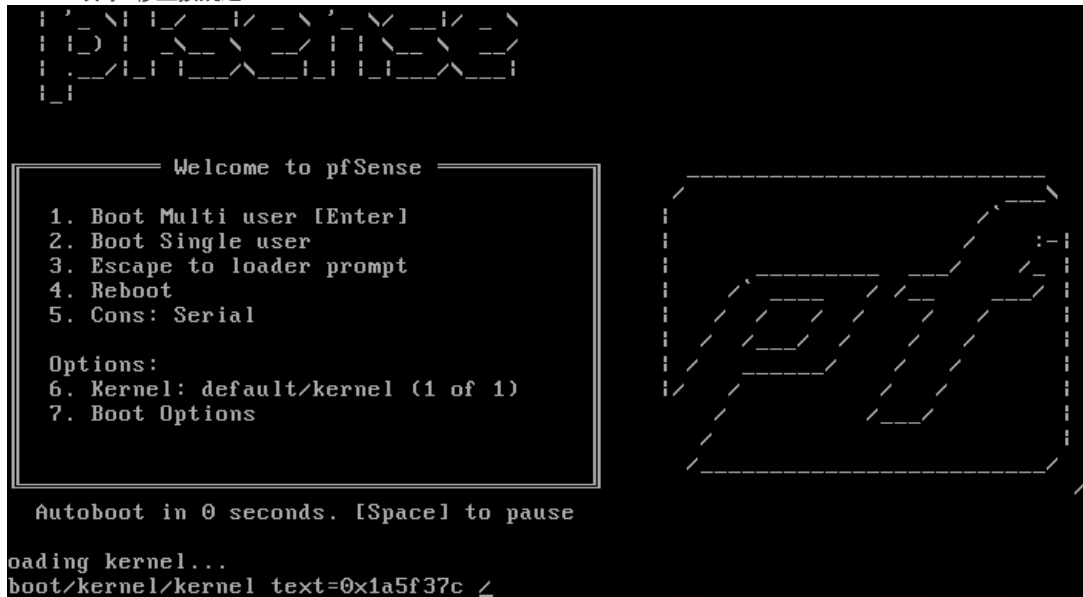
1. 安裝

1 安裝環境可以是X64 PC 或 VM

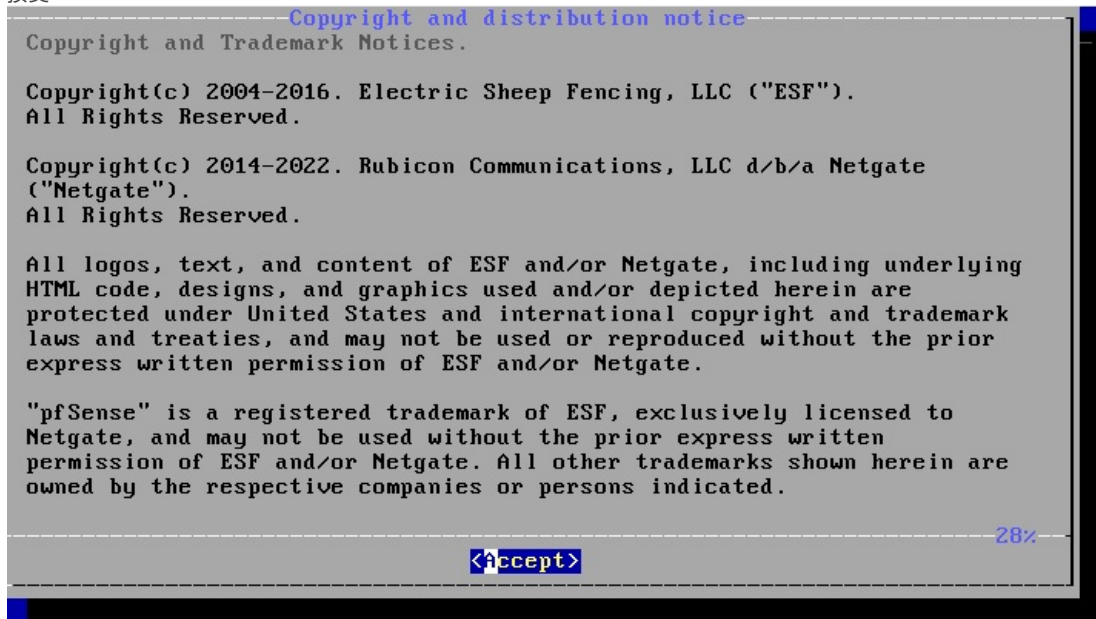
2 首先到官方網頁先下載安裝檔 <https://www.pfsense.org/download/>，下載光碟ISO 或是 IMG檔都可以，ISO燒錄成光碟，或使用ISO 或 IMG檔，寫入USB隨身碟，推薦軟體 IMGURN，balenaEtcher。

3 使用ISO或USB開機，

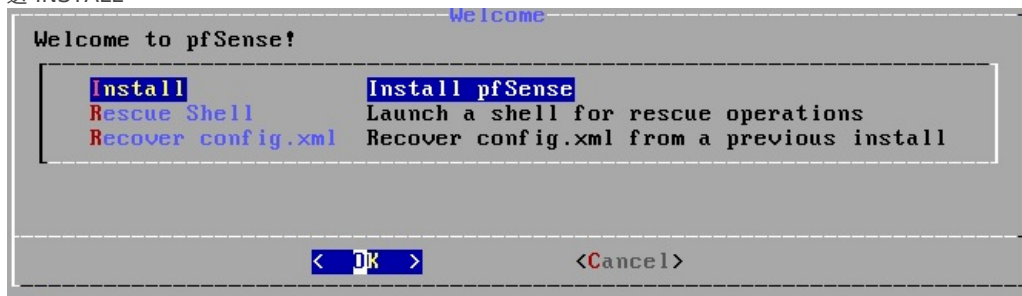
ENTER或等3秒直接跳過



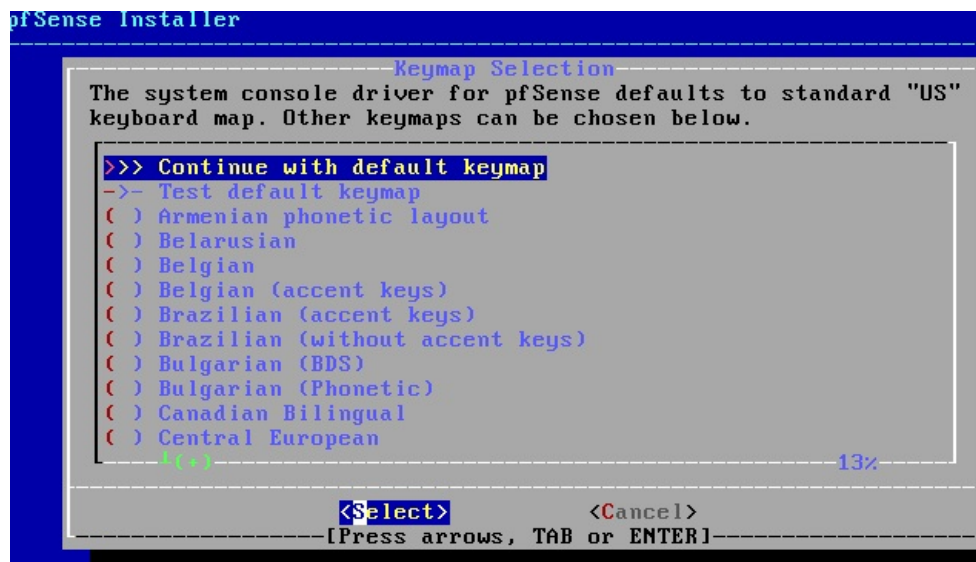
接受



選 INSTALL



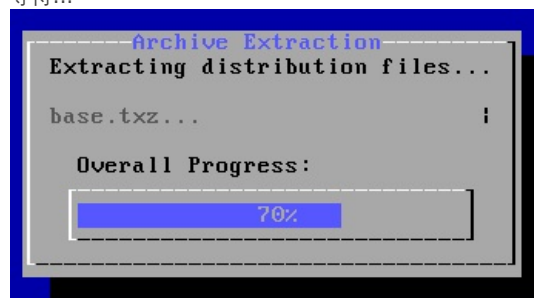
選預設鍵盤



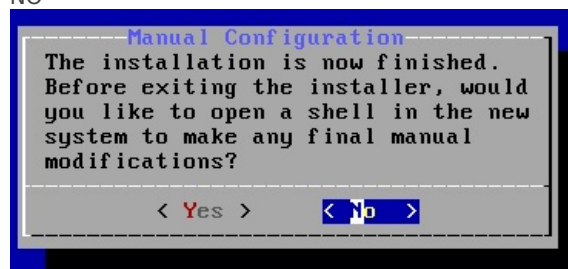
選UFS BIOS，新機可選 UFS-UEFI



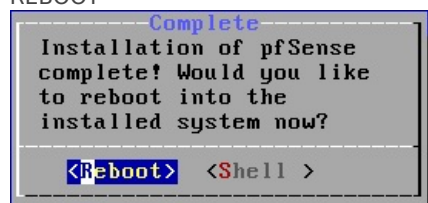
等待...



NO



REBOOT

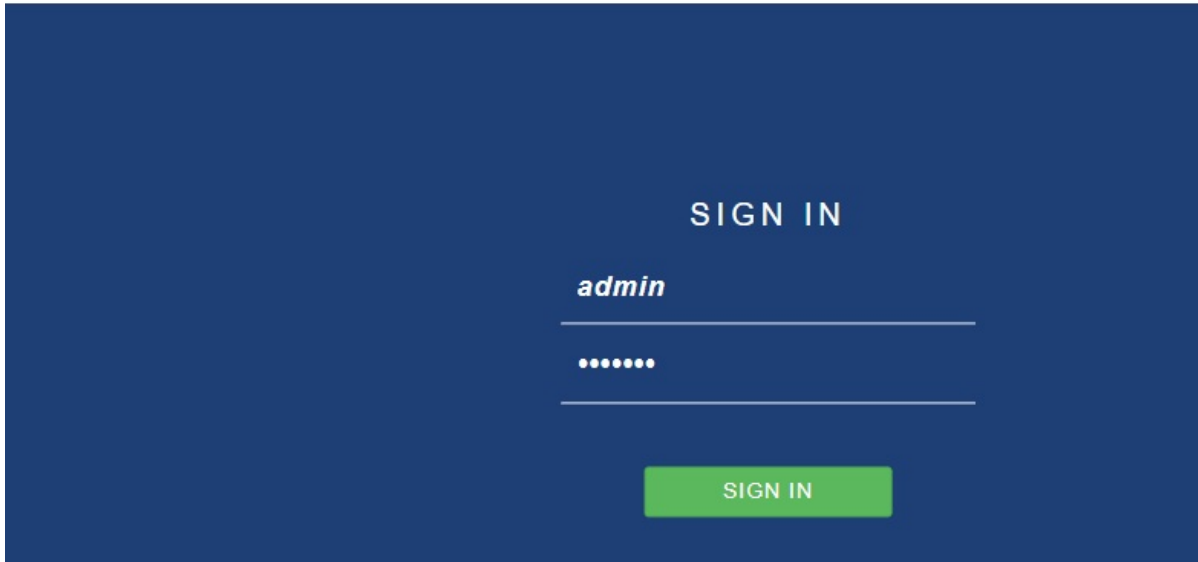


移出光碟後重新開機，會開到初始畫面

2. 初次設定

可以選擇本機畫面安裝，或網頁直接輸入IP 192.168.1.1(通常是第二個網路孔，第一孔DHCP，連不到先用本機安裝) 帳號 admin/pfsense 登入後進行安裝精靈。

網頁安裝 192.168.1.1



跑安裝精靈 依次輸入相關資訊

WARNING: The 'admin' account password is set to the default value. Change the password in the User Manager.

Wizard / pfSense Setup /

pfSense Setup

Welcome to pfSense® software!

This wizard will provide guidance through the initial configuration of pfSense.

The wizard may be stopped at any time by clicking the logo image at the top of the screen.

pfSense® software is developed and maintained by Netgate®

[Learn more](#)

[» Next](#)

本機安裝

```
VirtualBox Virtual Machine - Netgate Device ID: 754d8ac539448d1de773
*** Welcome to pfSense 2.6.0-RELEASE (amd64) on pfSense ***

WAN (wan)      -> em0          -> v4/DHCP4: 192.168.111.110/24
LAN (lan)      -> em1          -> v4: 192.168.1.1/24

0) Logout (SSH only)          9) pfTop
1) Assign Interfaces          10) Filter Logs
2) Set interface(s) IP address 11) Restart webConfigurator
3) Reset webConfigurator password 12) PHP shell + pfSense tools
4) Reset to factory defaults  13) Update from console
5) Reboot system             14) Enable Secure Shell (sshd)
6) Halt system               15) Restore recent configuration
7) Ping host                 16) Restart PHP-FPM
8) Shell

Enter an option: █
```

創勁基本設定

Hostname: pfs
domain: 對方網域 或隨便
密碼:

Firewall\Aliases 新增創勁IP

Firewall / Aliases / IP

IP Ports URLs All

- Aliases
- NAT
- Rules
- Schedules
- Traffic Shaper
- Virtual IPs

Firewall Aliases IP

Name	Values
------	--------

Firewall / Aliases / Edit

Properties

Name CPIC

The name of the alias may only consist of the characters "a-z, A-Z, 0-9 and _".

Description CPIC

A description may be entered here for administrative reference (not parsed).

Type Host(s)

Host(s)

Hint Enter as many hosts as desired. Hosts must be specified by their IP address or FQDN. Hosts are re-resolved and updated. If multiple IPs are returned by a DNS query, all are used. For example, as 192.168.1.16/28 may also be entered and a list of individual IP addresses

IP or FQDN 220.128.126.132

Firewall\Rules 增加信任IP (CPIC)

Edit Firewall Rule

Action
 Choose what to do with packets that match the criteria specified below.
 Hint: the difference between block and reject is that with reject, a packet (TCP RST or ICMP port unreachable for UDP) is returned to the sender whereas with block the packet is dropped silently. In either case, the original packet is discarded.

Disabled Disable this rule
 Set this option to disable this rule without removing it from the list.

Interface
 Choose the interface from which packets must come to match this rule.

Address Family
 Select the Internet Protocol version this rule applies to.

Protocol
 Choose which IP protocol this rule should match.

Source

Source Invert match /

Destination

Destination Invert match /

Extra Options

Log Log packets that are handled by this rule
 Hint: the firewall has limited local log space. Don't turn on logging for everything. If doing a lot of logging, consider using a remote syslog server (the Status: System Logs: Settings page).

Description
 A description may be entered here for administrative reference. A maximum of 52 characters will be used in the ruleset and displayed in the fir

3. 參考資料

英文

中文 <https://ithelp.ithome.com.tw/articles/10246505>

<https://docs.netgate.com/pfsense/en/latest/install/download-installer-image.html>

🔄 修訂版本 #4

★ 由 brianlin 建立於 16 September 2022 04:22:28

✍ 由 brianlin 更新於 29 June 2023 07:54:02